

# EnterpriseSCHEDULE Correlation Job Automation



Automate KeyStone using the powerful  
EnterpriseSCHEDULE job scheduling software

## Advanced KeyStone Automation

If you're a typical KeyStone user, your work requires a multitude of daily, repetitive tasks that take time away from the things you need to do. You may spend your day manually running Core batch jobs or zipping and FTPing Core output files throughout your organization.

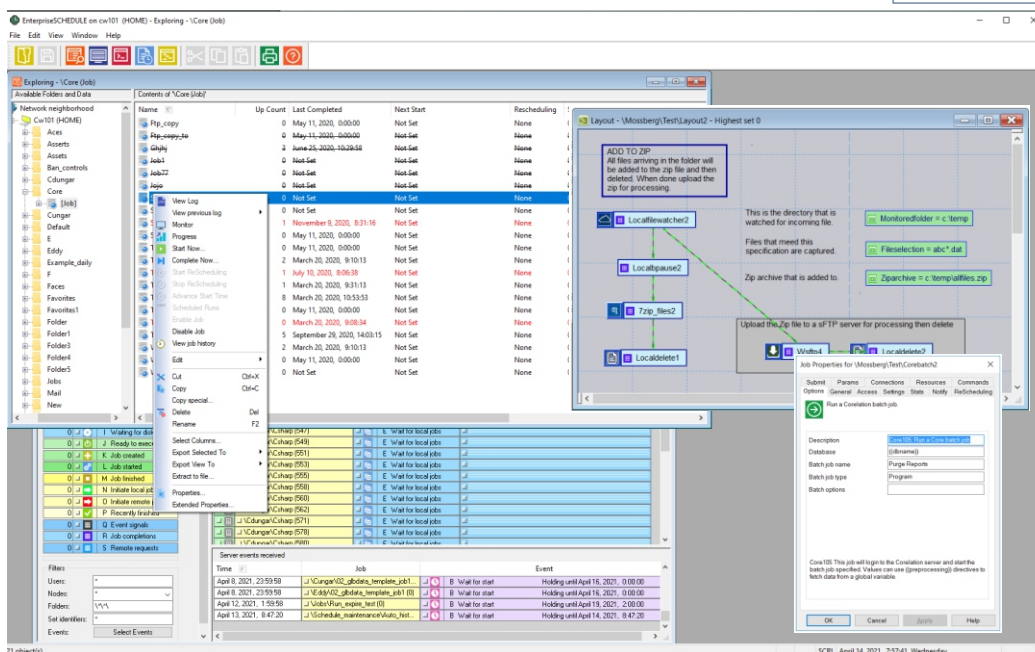
ISE has built a suite of KeyStone jobs that are designed to automate the most common tasks that you do daily, weekly or monthly. The Graphical Interface is augmented with custom dialogs that facilitate quick updating of parameters. Changes to database location, batch job names, file locations etc. can quickly be updated in custom dialogs.

**EnterpriseSCHEDULE** simplifies the automation of KeyStone tasks using features such as interdependencies and resources to assure a uniform job stream every time. Need a Core batch job to complete before zipping files and sending them via WSftp? **EnterpriseSCHEDULE** job streams make it easy to be sure your jobs only run when all the requirements have been met.

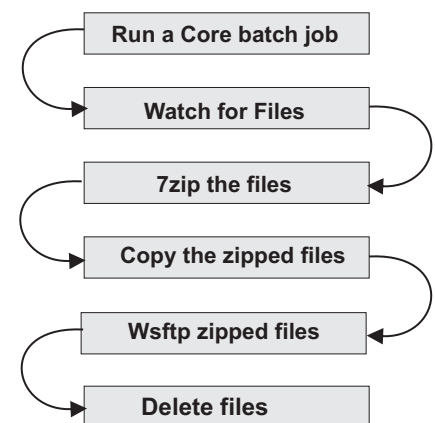
Control, monitor and administer job flow,  
view live job status in graphical layouts

## Key Features

- ☒ **Tightly coupled with KeyStone through a variety of customized job configurations designed specifically for users to automate tasks**
- ☒ **Limit or grant access to job configuration and automation using EnterpriseSCHEDULE's multi-tiered secure environment.**
- ☒ **Includes a core library of job templates which can be used to quickly create KeyStone jobsets that perform the most essential and repetitive tasks**
- ☒ **Develop simple to use job streams that rely on time, resources, interdependencies and other logical factors to determine the flow of critical system events**
- ☒ **Receive continuous and current feedback on your job activity through email notification alerts, live job monitoring and pop up alerts of job status**



An example of an interdependent stream  
of jobs automating Keystone processing



# EnterpriseSCHEDULE Corelation Job Automation



## EnterpriseSCHEDULE brings Customization and Flexibility to KeyStone automation

### Manage KeyStone jobs from a single point of control

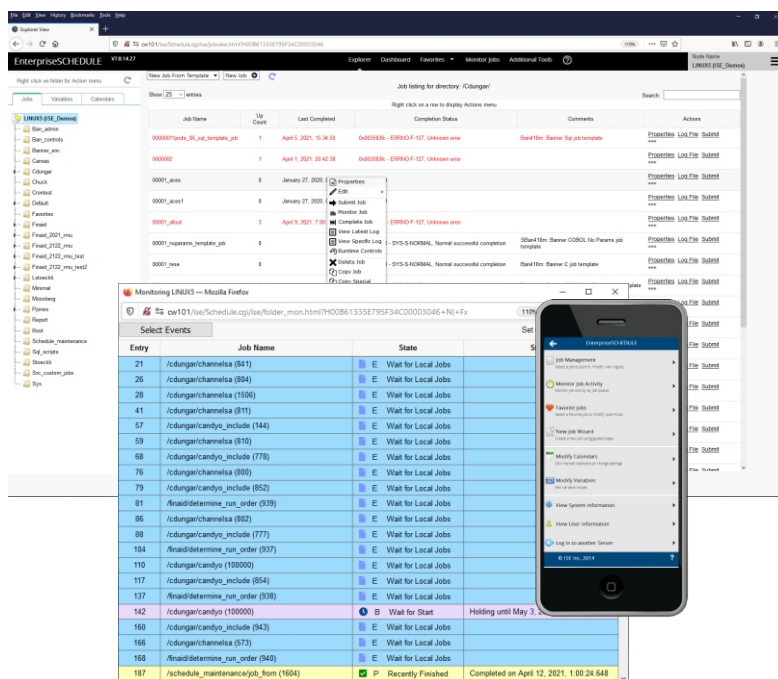
EnterpriseSCHEDULE's graphical display provides a real time view of all connected nodes and platforms across an enterprise. This gives you complete access to the custom properties, status, current state and historical log data of all KeyStone jobs.

EnterpriseSCHEDULE is renowned for its dependability and fault tolerance. Any number of Security Groups are enforced at the host and user level. This eliminates any single point of failure that is the downfall of many job schedulers.

The single point of control model gives users powerful tools to:

- Create job layouts that display job interdependencies and reflect real time job status
- Create simple or complex interdependencies between jobs
- Use external or local resource variables as parameters and to add more control to job flow
- Monitor, control and administer all jobs from a single point across platforms and enterprises
- View logs and current status of jobs in real time as jobs progress.
- Submit jobs based on time-based controls, manually or initiated by other jobs
- Automatically determine flow path based on job status, resource evaluations or variable values
- Control, monitor and administer jobs on multiple servers simultaneously
- Create custom job templates to extend the Core job template library to suit the needs of your operations.

Browser based Web client includes Desktop and Mobile job interaction



### Multiple User Interfaces

- Windows user interface includes integrated KeyStone dialogs and prototype jobs to seamlessly create custom job streams
- Web based user interface for browser based access to Corelation job dialogs and submission, control and administration of all jobs.

### EnterpriseSCHEDULE is the essential Corelation Automation Tool

Job Scheduling is becoming more and more crucial as the number of processes increase for KeyStone users. EnterpriseSCHEDULE is an integrated scheduling tool with customized forms and a suite of essential job templates that will make your transition to KeyStone automation seamless.

KeyStone is a registered trademark of Corelation Inc.